

# The Brookwood



3 BEDROOMS • 2 BATHS • BONUS ROOM • 3450 SQ. FT.

ELEVATION A



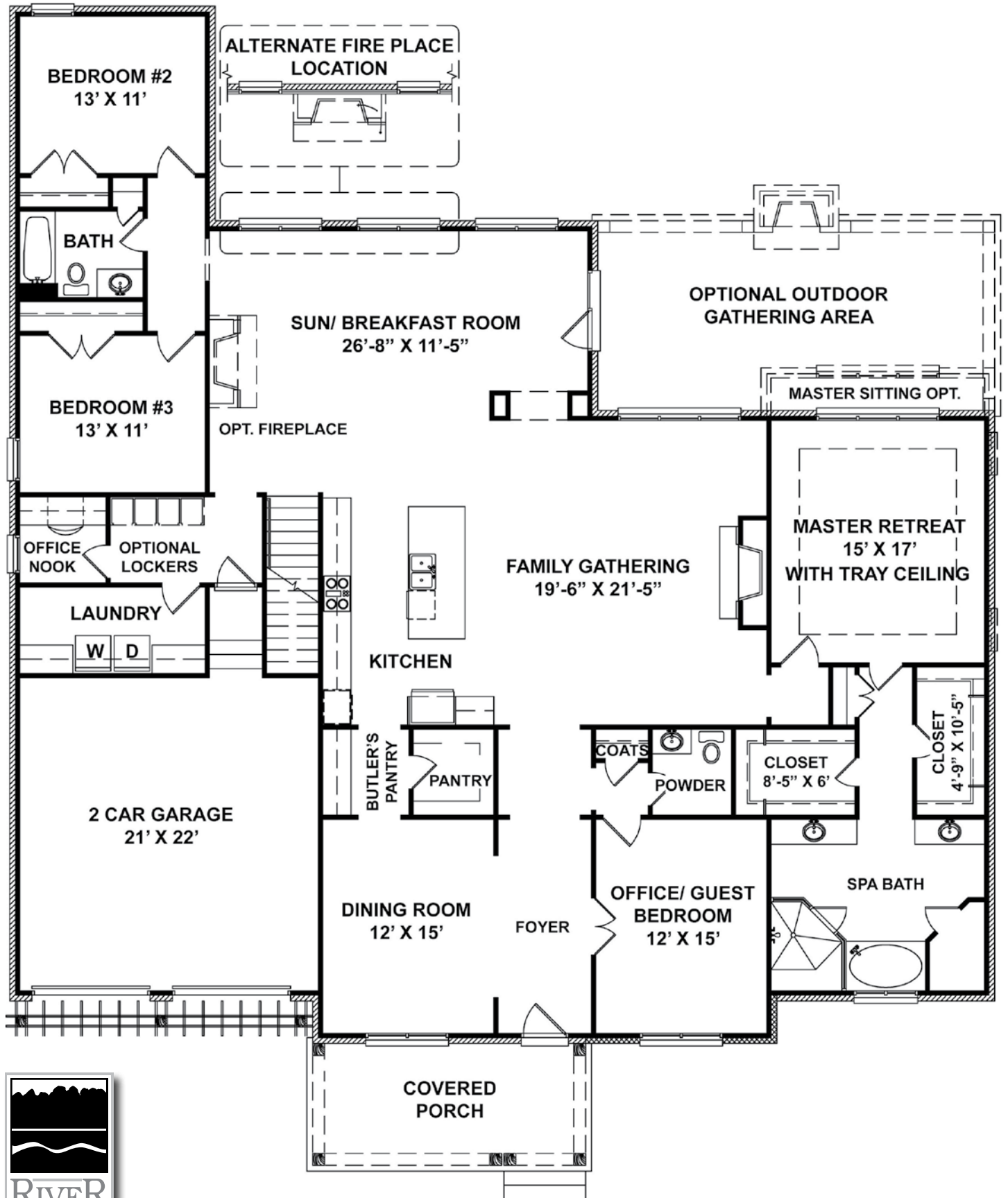
ELEVATION B

**RIVERBIRCH HOMES AT ARRINGTON RETREAT**

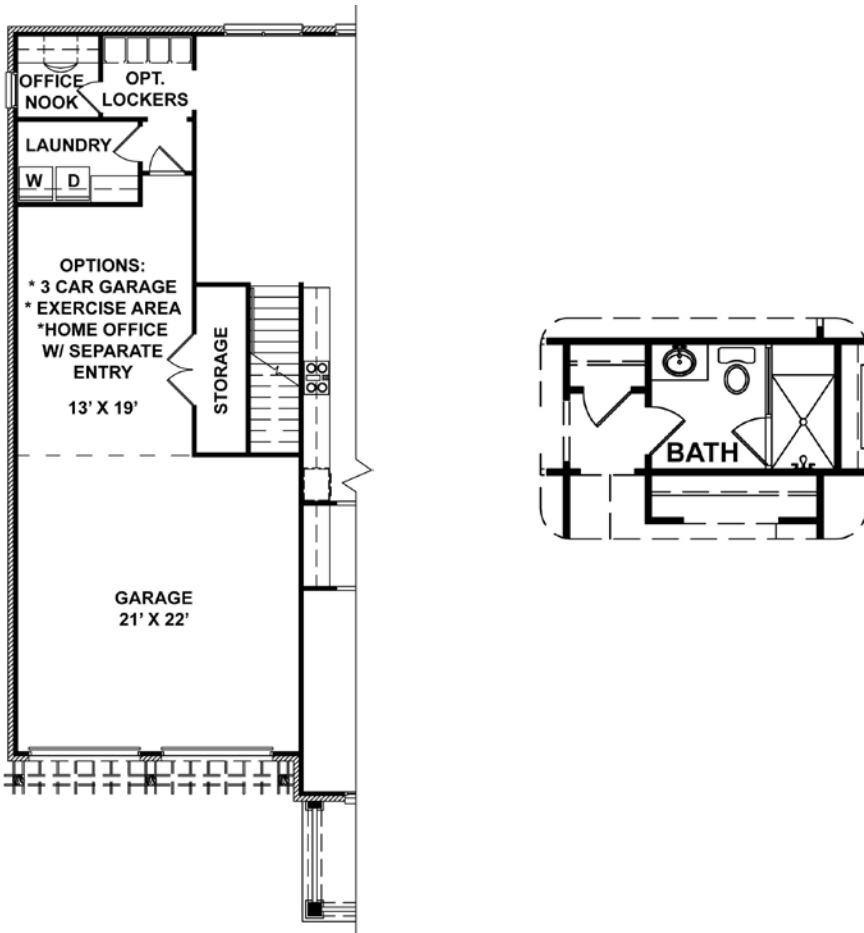
Sales by Kendra Cooke, Bob Parks Realty • 615-574-7359 / 615-370-8669 • [kendra@kendracooke.com](mailto:kendra@kendracooke.com)



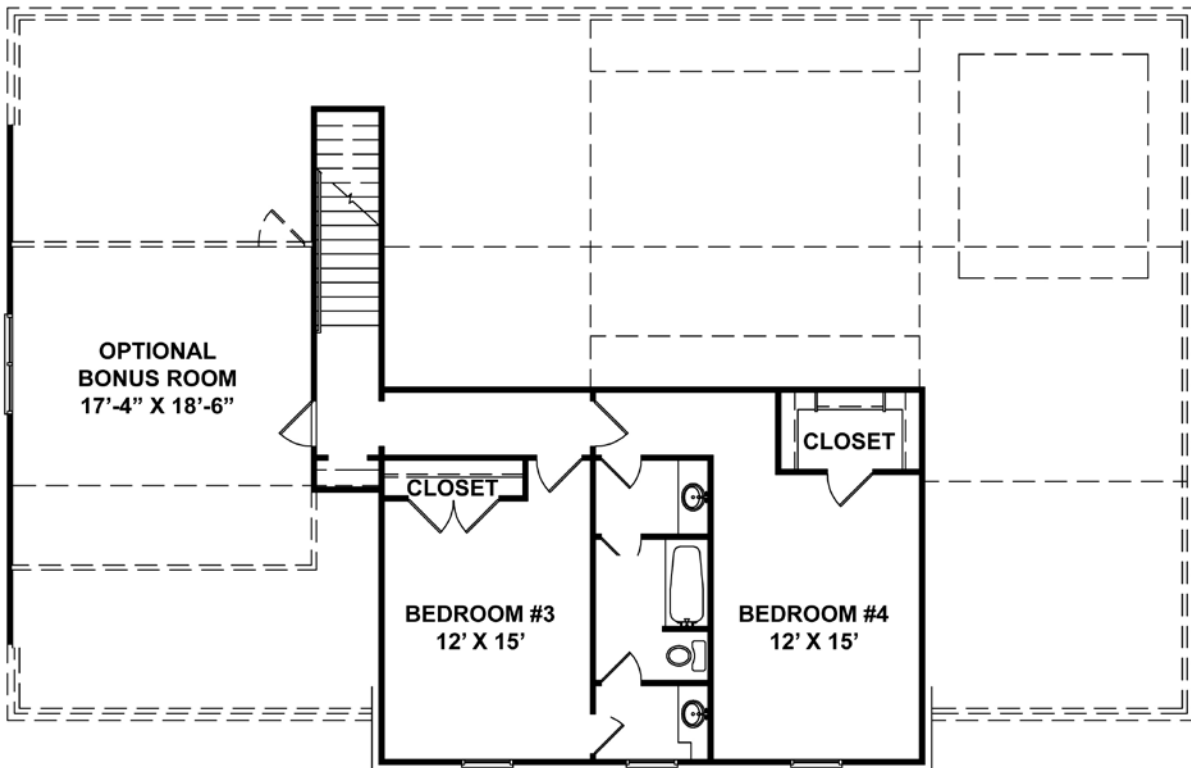
FIRST FLOOR • THE BROOKWOOD



## FIRST FLOOR OPTIONS • THE BROOKWOOD



## SECOND FLOOR OPTIONAL WITH ALTERNATE ELEVATIONS



## STANDARD FEATURES

Compare these features before you buy. Yes, it's all included!

### Exterior Features

- Timeless exterior elevations drawn by Brad Shapiro Architect
- Eight-foot solid front door with deadbolt
- Two car garages with carriage style doors
- Hardi-Plank masonry siding with 50-year manufacturer's limited warranty
- Brick front and three sides, per plan
- Designer roof shingles with 25-year manufacturer's limited warranty
- Custom-made antique bronze address plates
- Two exterior faucets per plan
- Front and rear GFI outlets
- Broom-finished patios
- Professionally landscaped
- Mailbox with cast iron stand
- Gutters on all eaves of home with collectors and downspouts per plan
- Garage with sheetrock and paint
- Doorbell with chime

### Quality Interior Features

- Custom-finished nine-foot minimum ceilings with higher on vaulted areas per plan
- Oil-rubbed bronze hardware
- Raised two-panel interior doors with 3-1/2" door trim
- 4-1/4" crown molding in entry and formal dining room
- 4-1/4" base molding first floor
- Copper electric wiring
- Smoke detectors with battery back-ups
- Designer lighting package in choice of oil-rubbed bronze
- Sand and finish oak flooring in entry, kitchen, breakfast room
- Tile floors in laundry room
- 36" ventless fireplace and tile surround with gas logs
- Contrasting interior wall paint and semi-gloss trim
- Large closets with durable ventilated shelving
- Wall-to-wall stain-resistant carpet with high-density pad

### Professionally Decorated Kitchens

- Custom-designed gourmet kitchen with abundant cabinet space
- Stainless steel smooth-top electric cooktop with double self-cleaning ovens, stainless Quiet Wash dishwasher, stainless

- microwave and 1/2 HP disposal
- Real maple cabinets with concealed hinges
- Double bowl, extra-deep stainless undermount sink
- Granite tops

### Luxurious Bath Features

- Oversized soaking tubs with separate showers
- 36" vanities with undermount sinks in master bath
- Custom-made cultured marble vanity tops
- Real maple cabinets in master and secondary baths
- Ceramic tile on all bath floors

### Safety & Energy-Saving Features

- 13 SEER fully matched heating and cooling systems
- Digital thermostats
- Pilotless gas central heating system
- Energy-efficient gas water heater
- Ground fault interrupters at the kitchen, baths and exterior outlets
- Low E wood windows with enhancing grille accents
- House wrap
- R-38 blown insulation in ceilings
- R-30 insulation in vaults
- R-13 wall rating

### Techniques

- RiverBirch Homeowners Manual
- Custom-fit construction, no prefab materials
- 16" stud spacing on all exterior and interior walls
- 3/4" T&G sub-flooring (glued, nailed and screwed)
- Scheduled inspections with your Personal Builder to assure satisfaction

### Interior Design Consultation

All homeowners benefit from a consultation with an interior designer to assist with color selections and customizing design choices to your taste and preferences

### Team Commitment

Throughout the building process, your Personal Builder and Sales Consultant are meeting you periodically and communicating with you regarding the specifics of your home.